

NEWS LETTER

ZX050— SMA Circuit Application breakout adapter

Zebax introducing [ZX050](#) Surface Mount Devices, SMD, circuit application breakout adapters for purpose for validation, characterization, test and instrumentation applications. The [ZX050](#) product line support variety of SMD packages with purpose of providing general application tool to instrumentation application. Offering SMA connectors (35 μ gold plated at pin) reaching 10GHz performance at 0.1dB signal loss attributed to board to board connectors. All ZX050 modules are designed with 50 Ω trace impedace using 4 layer PCB.

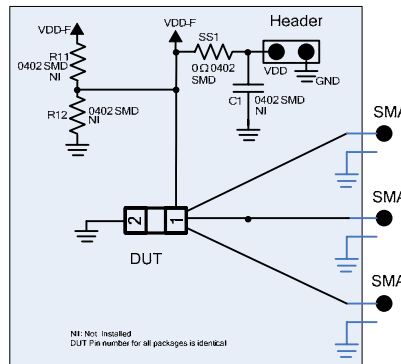
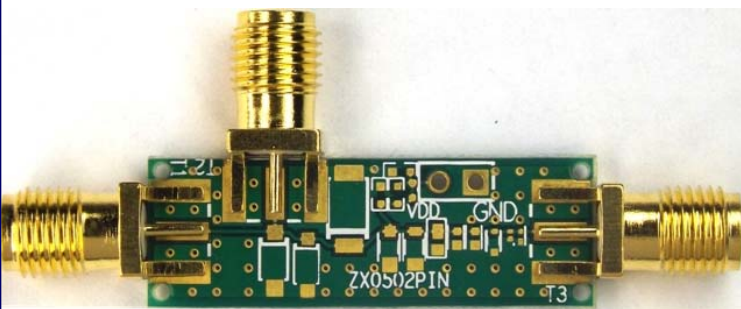
Application: Signal characterization, performance analysis., pre-bringup and functional and interface testing of discrete electrical components diodes, capacitors, resistors, LEDs, Beads, rectifiers and

ZX050-2PIN

[ZX050-2PIN](#), breakout adapter supports variety of SMD 2 pin packages with 3 SMA connectors (35 μ gold plated at pin). One or all SMD devices can be populated for testing. The supported packages are: *WLCSP2, DFN1608D-2, DFN1006D-2, DFN1006-2, DSN0603-2, SOD523, SOD323F, SOD323, SOD128, SOD123W, SOD123F, SOD123*

Designed with 50 Ω trace impedace using 4 layer PCB— < 0.1dB signal loss DC - 10GHz

Application: Device testing, bringup, characterization, instrumentation and performance analysis of any SMD device using pages listed above..

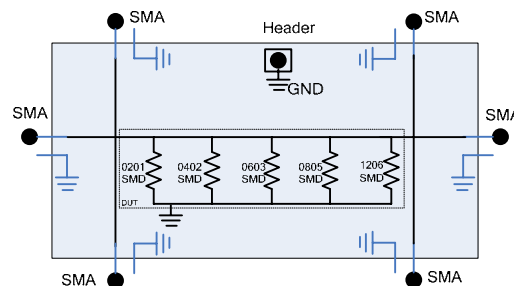
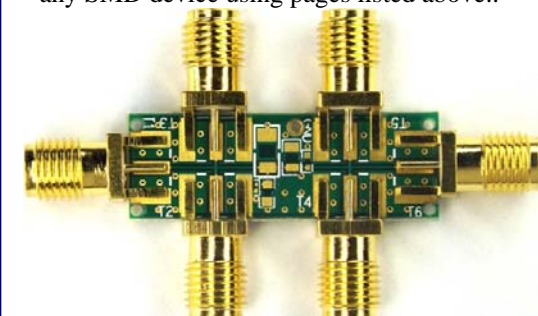


ZX050-PD246812

[ZX050-PD246812](#), breakout adapter in **Pull-Down** configuration supports variety of SMD 2 pin packages with SMA connectors (35 μ gold plated at pin). One or all SMD devices can be populated for testing. The supported packages are: *201, 0402, 0603, 0805 and 1206*

Designed with 50 Ω trace impedace using 4 layer PCB— < 0.1dB signal loss DC - 10GHz

Application: Device testing, bringup, characterization, instrumentation and performance analysis of any SMD device using pages listed above..

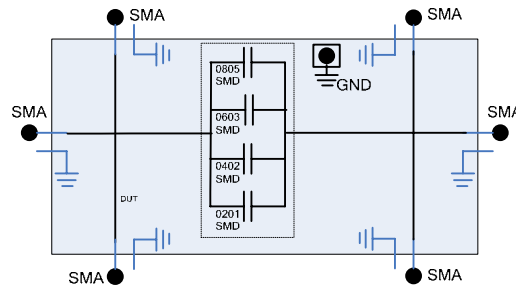
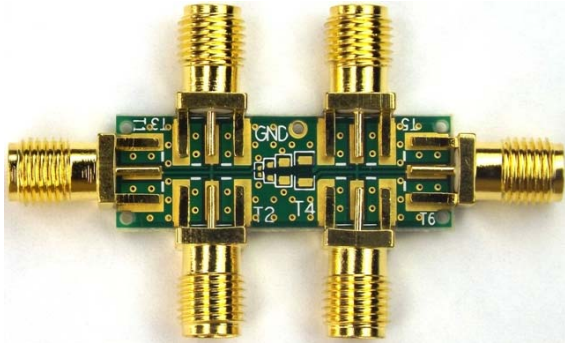


ZX050-DC28

ZX050-DC28, breakout adapter in DC blocking capacity configuration supports variety of SMD 2 pin packages with SMA connectors (35 μ gold plated at pin). One or all SMD devices can be populated for testing. The supported packages are: 201, 0402, 0603, 0805 and 1206

Designed with 50 Ω trace impedance using 4 layer PCB— < 0.1dB signal loss DC - 10GHz

Application: Device testing, bringup, characterization, instrumentation and performance analysis of any SMD device using pages listed above..

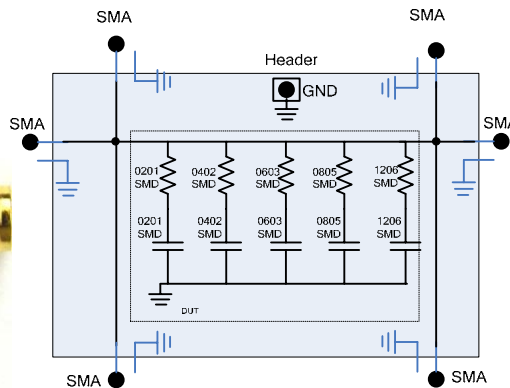
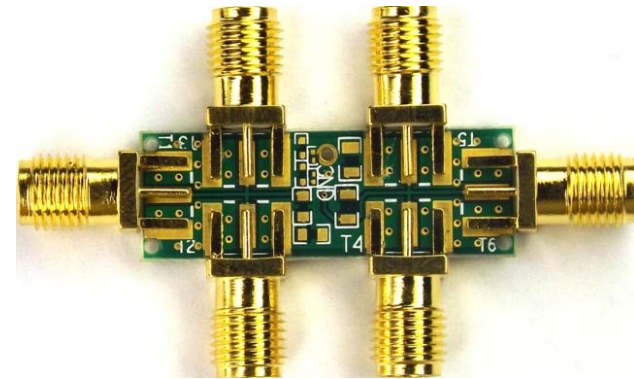


ZX050-RCS

ZX050-RCS, breakout adapter in RC snubber circuit configuration supports variety of SMD 2 pin packages with SMA connectors (35 μ gold plated at pin). One or all SMD devices can be populated for testing. The supported packages are: 201, 0402, 0603, 0805 and 1206 . *Application may vary as the footprints can be populated as required by customer application*

Designed with 50 Ω trace impedance using 4 layer PCB— < 0.1dB signal loss DC - 10GHz

Application: Device testing, bringup, characterization, instrumentation and performance analysis of any SMD device using pages listed above..

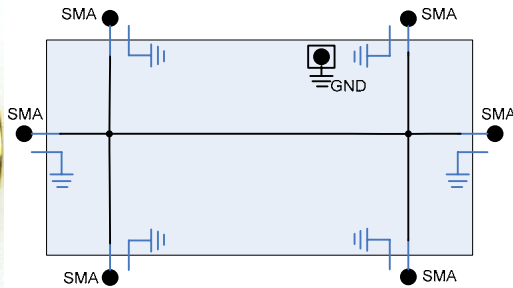
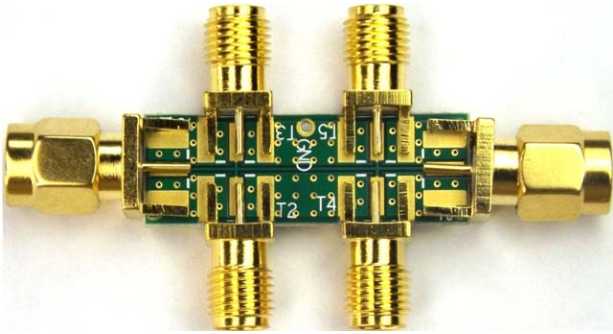


ZX050-BYP

ZX050-BYP, Passive SMA splitter offering variety of SMA configuration with SMA connectors (35 μ gold plated at pin).

Designed with 50 Ω trace impedance using 4 layer PCB— < 0.1dB signal loss DC - 10GHz

Application: Device testing, bringup, characterization, instrumentation and performance analysis of any SMD device using pages listed above..



You're receiving this email as you have subscribed to the Zebax.com newsletter or referred by colleague. You may reply to this email with "unsubscribe" at subject line if no longer wish to receive email communications from Zebax at any time.
Questions or comments ? email us at contact@zebax.com