

## NEWS LETTER

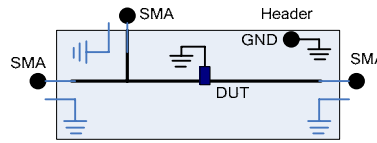
### ZX050— SMD 2 pin SMA breakout adapter

Zebax introducing [ZX050](#) Surface Mount Devices, SMD, breakout adapters for purpose for validation, characterization, test and instrumentation applications. The [ZX050](#) product line support variety of SMD 2 pin packages with 3 SMA connectors ( 35 $\mu$  gold plated at pin ) reaching 10GHz performance at 0.1dB signal loss attributed to board to board connectors. All ZX050 modules are designed with 50  $\Omega$  trace impedace using 4 layer PCB.

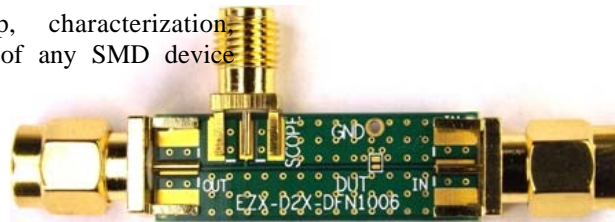
**Application:** Signal characterization, performance analysis., pre-bringup and functional and interface testing of discrete electrical components diodes, capacitors, resistors, LEDs, Beads, rectifiers and more...

### ZX050-DFN1006 ( SOD882 )

Introducing [ZX050-DFN1006](#), best in class DFN1006 breakout adapter meeting GHz performance at < 0.1dB signal loss . Designed with 50  $\Omega$  trace impedace using 4 layer PCB.

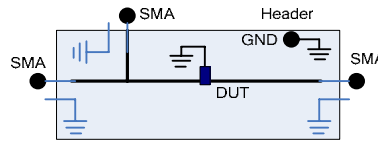


**Application:** Device testing, bringup, characterization, instrumentation and performance analysis of any SMD device using DFN1006 ( SOD882) package.

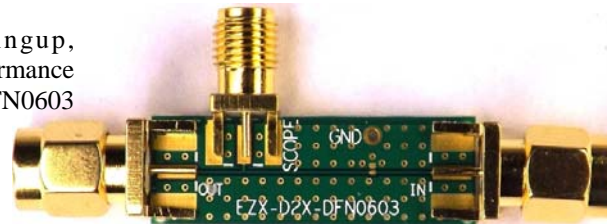


### ZX050-DFN0603 ( SOD962 )

[ZX050-DFN0603 \( SOD962 \)](#), breakout adapter enabling GHz performance at < 0.1dB signal loss . Designed with 50  $\Omega$  trace impedace using 4 layer PCB.

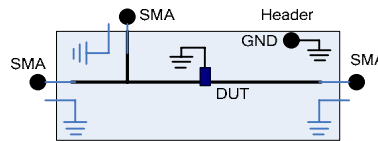


**Application:** Device testing, bringup, characterization, instrumentation and performance analysis of any SMD device using DFN0603 ( SOD962) package.



### ZX050-SOD523 ( SC79 )

[ZX050-SOD523 \( SC79 \)](#), breakout adapter enabling GHz performance at < 0.1dB signal loss . Designed with 50  $\Omega$  trace impedace using 4 layer PCB.



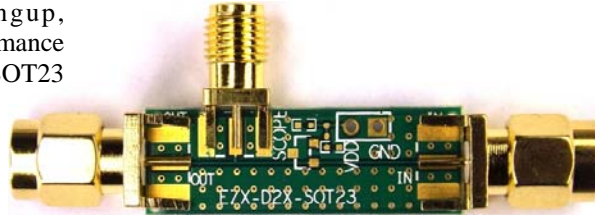
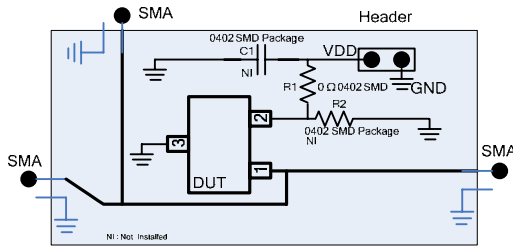
**Application:** Device testing, bringup, characterization, instrumentation and performance analysis of any SMD device using SOD523 ( SC79) package.



### ZX050-SOT23 ( TO236AB )

ZX050-SOT23 ( TO236AB ), breakout adapter enabling GHz performance at < 0.1dB signal loss . Designed with 50  $\Omega$  trace impedace using 4 layer PCB.

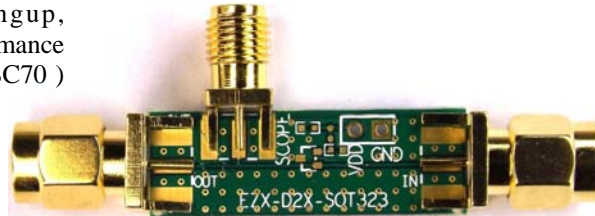
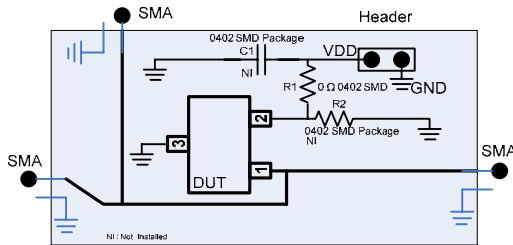
**Application:** Device testing, bringup, characterization, instrumentation and performance analysis of any SMD device using SOT23 ( TO236AB ) package.



### ZX050-SOT323 ( SC70 )

ZX050-SOT323 ( SC70 ), breakout adapter enabling GHz performance at < 0.1dB signal loss . Designed with 50  $\Omega$  trace impedace using 4 layer PCB.

**Application:** Device testing, bringup, characterization, instrumentation and performance analysis of any SMD device using SOT323 ( SC70 ) package.



You're receiving this email as you have subscribed to the Zebax.com newsletter or refereed by colleague. You may reply to this email with "unsubscribe" at subject line if no longer wish to receive email communications from Zebax at any time. Questions or comments ? email us at [contact@zebax.com](mailto:contact@zebax.com)