

Product Name: ZX182M FMC Vita 57.1 Agilent Tektronix Mictor connector probe test board - breakout adapter
 passive FPGA Mezzanine Card
Agilent - Mictor probes : E5346A E5380A E5381A E5382A
TekTronix – Mictor Probe P6434

Product Description: FPGA Mezzanine card , FMC , passive breakout adapter, meeting VITA 57.1 standard bus interfacing with Agilent and Tektronix Mictor or flying leads differential / single ended probes. Includes 10 rows x 40 pins, totaling **400** pins High Pin Count, HPC, (**200** pins for LPC – Low Pin Count), FCI Meg-Array, housing both CC (Carrier Card - Host) and MC (Mezzanine Card) connectors.

ZX182M is offered in HPC, LPC and FCI Meg-Array connector configuration, see ordering information

Fully compatible with 10 rows x 40 pins single ended or differential pairs design configuration

- All signals are accessible via designated probe's connector, IPEX, Header, and 0402 SMD package.
- All Clocks are accessible via IPEX-37 connectors
- JTAG signals accessible via 2x4 pin header
- All Power Supply signals accessible via 2x4 pin headers with on-board LEDs indicators.
- Improved signal integrity and crosstalk with **12 layers PCB** with each layers guarded by GROUND plane.
- Designed for **50Ω** single ended and **100Ω** differential trace impedance exceeding VITA 57.1 standard.
- DC to 10GHz bandwidth applications

GND test point for easy access as well as applying external ground reference

Application: FMC VITA 57.1 daughter card Bringup, testing, emulation, Xilinx development Virtex 6 Virtex 7 interface testing daughter board to host, modular design evaluations

Access: 2x4 pin header, SMD 0402 Package footprint as well as P68xx designated connectors

Pitch: 1.27mm (0.05") High Speed connector

Mates with : Xilinx FPGA development systems Virtex 6 Virtex 7 connecting daughter board to Host
 Any and all FMC VITA 57.1 compliant design CC-LPC-xxx CC-HPC-xxx MC-HPC-xxx MC-LPC-xxx
 where xxx is 10L, 10, 8.5L 8.5

Samtec Molex HI-SPEED HI-DENSITY SEARRAY design connectors.
 SEAM SADL SEAMP SEAR SEAMI SEAC FMC HPC LCP
 SEAF-040-08.0-L-10-2-A SEAF-040-08-L-10-2-A
 SEAFP-40 SEAMP-040 SEAMI-040 SEAR-040-10-10- SEAM-040
 All listed Samtec Molex FMC connectors listed, table below:

ZX18x FMC breakout adapter mates with the following Samtec Molex CC / MC SEARRAY™ VITA 57.1 Connectors

Molex PN	Samtec PN	VITA PN	Description	Mated Stack Height
45971-4307	ASP-127796-01*	CC-LPC-10L	female	
45971-4317	ASP-134485-01*	CC-HPC-10L	female	
45971-4315	ASP-134486-01	CC-HPC-10	female	
45971-4305	ASP-134603-01	CC-LPC-10	female	
45970-4117	ASP-134601-01*	MC-HPC-8.5L	male	8.5 mm
45970-4115	ASP-134602-01	MC-HPC-8.5	male	8.5 mm
45970-4107	ASP-134605-01*	MC-LPC-8.5L	male	8.5 mm
45970-4105	ASP-134606-01	MC-LPC-8.5	male	8.5 mm
45970-4307	ASP-127797-01	MC-LPC-10L	male	10 mm
45970-4317	ASP-134487-01	MC-HPC-10L	male	10 mm
45970-4315	ASP-134488-01	MC-HPC-10	male	10 mm
45970-4305	ASP-134604-01	MC-LPC-10	male	10 mm

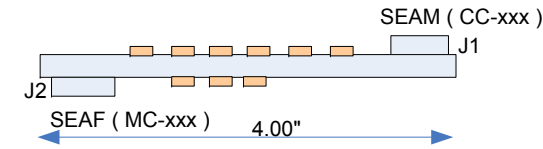
Notice

ALL ZEBAX TECHNOLOGIES DESIGN SPECIFICATIONS, DRAWINGS, PUBLICATIONS, AND OTHER DOCUMENTS (TOGETHER AND SEPARATELY, "MATERIALS") ARE BEING PROVIDED "AS IS." ZEBAX MAKES NO WARRANTIES, EXPRESSED, IMPLIED, STATUTORY, OR OTHERWISE WITH RESPECT TO THE MATERIALS, AND EXPRESSLY DISCLAIMS ALL IMPLIED WARRANTIES OF NO INFRINGEMENT, MERCHANTABILITY, AND FITNESS FOR A PARTICULAR PURPOSE.

Information furnished is believed to be accurate and reliable. However, Zebax Technologies assumes no responsibility for the consequences of use of such information or for any infringement of patents or other rights of third parties that may result from its use. Specifications mentioned in this publication are subject to change without notice. This publication replaces all other information previously supplied. Zebax Technologies products are not authorized as in life support devices or systems.

ZX182M Block diagram, See Page 2

ZX182M , Passive FMC VITAL 57.1 breakout adapter – test board



CC: Carrier Card typically located on Host
 MC: Mezzanine Card, typically located on Mezzanine Card
 SEAF: SEARRAY Female connector
 SEAM: SEARRAY Plug (Male) connector

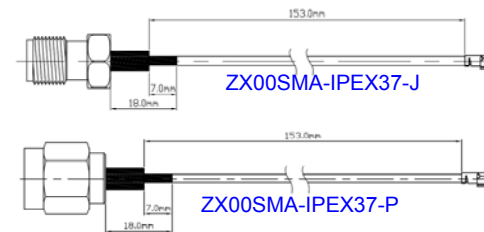
Probe connector, headers, IPEX-37 access points

ZX182MD-X-X Package includes:

Part number	Quantity	Description
ZX182M-X-X	1	FMC Mezzanine Module
ZX00SMA-IPEX37-X	4	SMA to IPEX-37 cable assembly , Note 1, See ordering information

Notes:

1- Used for measuring or supplying external Clocks.



ZX182M-F-X Mates with any and all FMC VITA 57.1 compliant design using FCI Meg-Array 400 pins design. Meg-Array 10 rows x 40 pins FPGA Mezzanine Card (daughter)

Mated Stack Height: 4mm 6mm 8mm 10mm 12mm 14mm
 Meets Telcordia GR-1217-CORE and NPS25298-2 Specifications

FCI ZX18x-F-X FCI Meg-Array 10rows x 40 pins FMC breakout adapter mates with the following FCI Meg-Array VITA 57.1 Connectors

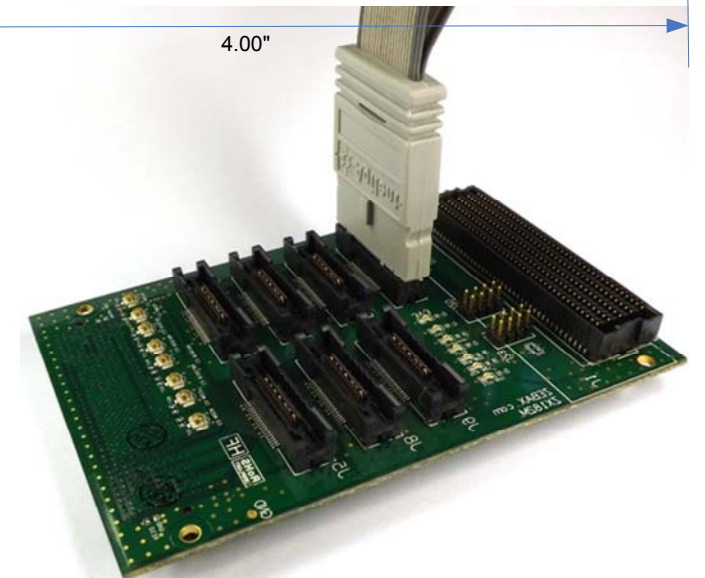
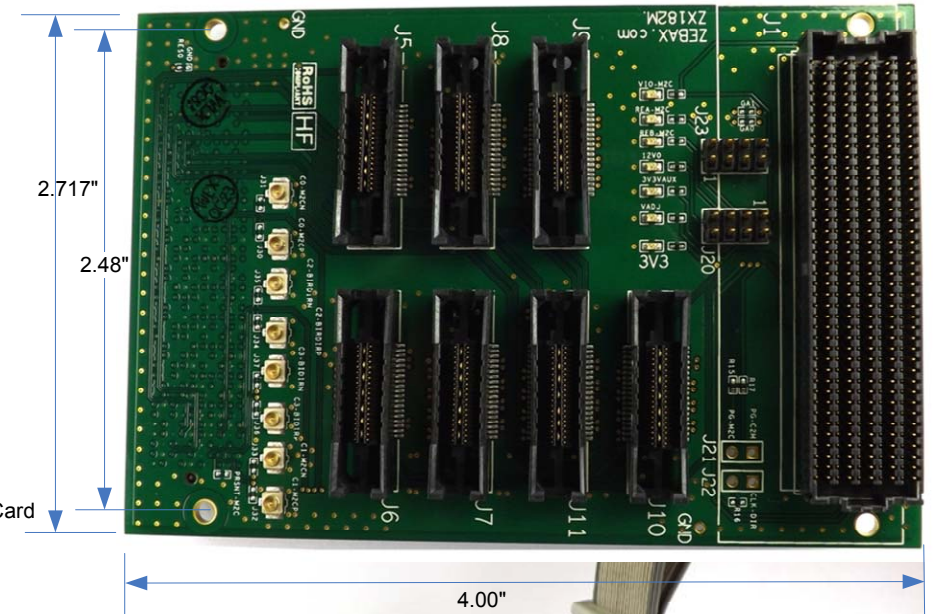
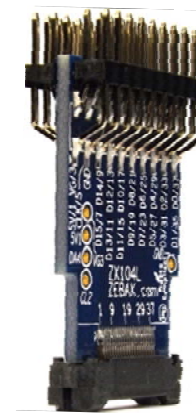
Plug (CC)		Receptacle (MC)		
84520-002LF	84740-002LF	74221-001LF	74388-001LF	74390-001LF*
84520-101LF	84740-102LF	74221-101LF	74388-101LF	74390-101LF
84520-202LF*	84740-202LF	74221-201LF	74388-201LF	74390-201LF
84520-092LF	84740-092LF	74221-091LF	74388-091LF	74390-091LF
84520-192LF	84740-192LF	74221-191LF	74388-191LF	74390-191LF
84520-292LF	84740-292LF	74221-291LF	74388-291LF	74390-201LF
6mm Plug	0mm Plug	4mm	6mm	8mm

Mated Stack Height

* Used on ZX182P-F-X

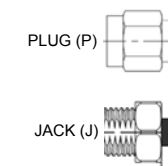
LF : Lead Free

ZX104LN (from Zebax) products complement ZX182M providing flying leads interface to any scope or Logic Analyzer.



Ordering INFO:

Part Number	options
ZX182M-X-X	J : SMA Jack (Standard) P : SMA Plug connector
	H : HPC - High Pin Count connector L : LPC - Low Pin Count connector F : FCI - FCI Meg-Array connector



Note
 ALL ZEBAX products are RoHS compliant and Lead Free unless otherwise indicated.

ZEBAX TECHNOLOGIES
 SANTA CRUZ, CA U.S.A (831) 2 2 2 - 0717
 WWW.ZEBAX.COM

SPECIFIED DIMENSIONS ARE INCHES (MM). ROHS COMPLIANT

ASSEMBLY DRAWING

ITEM: ZX182M

DESCRIPTION: FMC VITA 57.1 test board Agilent Tektronix Mictor or Flying Leads probe – passive mezzanine

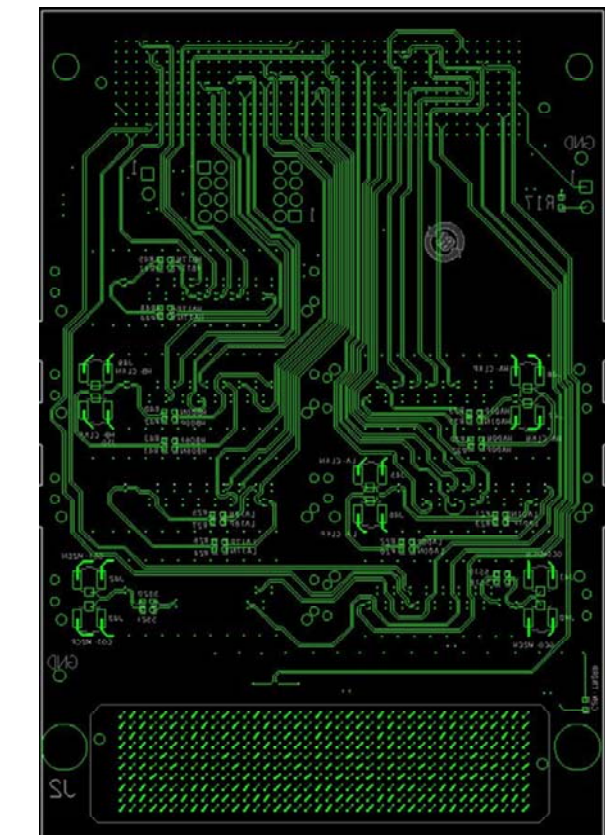
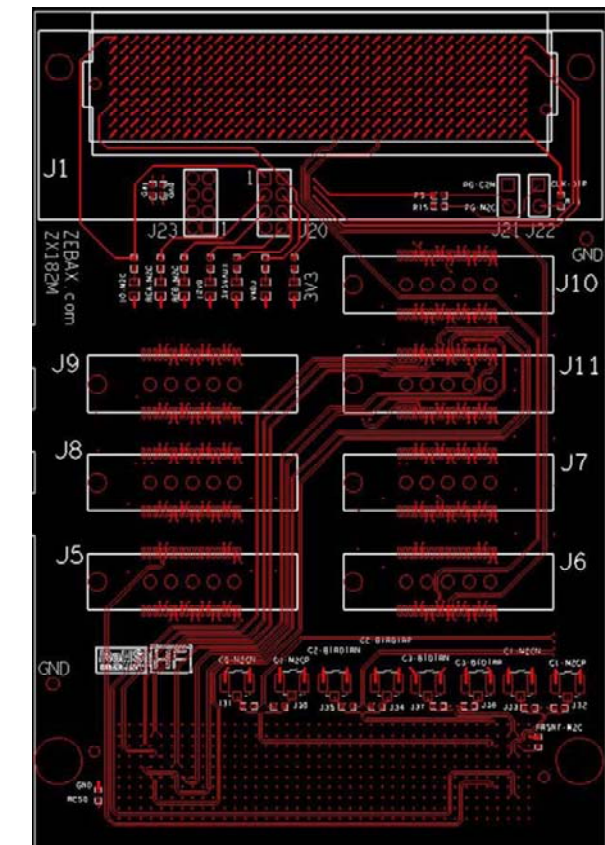
CHECKED: M. MARINA

DRAWN: SLAVIK

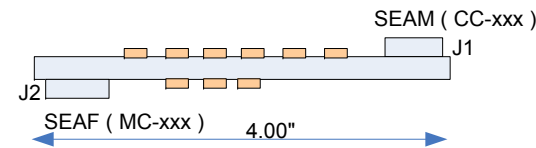
REVISION: 1.0

SHEET: 1 OF 3

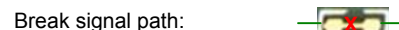
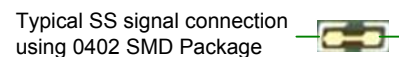
Product Name: ZX182M FMC Vita 57.1 Agilent Tektronix Mictor connector probe test board - breakout adapter
passive FPGA Mezzanine Card Agilent - Mictor probes : E5346A E5380A E5381A E5382A
TekTronix – Mictor Probe P6434



ZX182D , Passive FMC VITAL 57.1 breakout adapter – test board



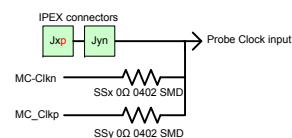
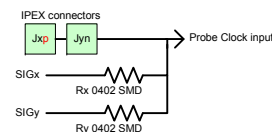
CC: Carrier Card typically located on Host
 MC: Mezzanine Card, typically located on Mezzanine Card
 SEAF: SEARRAY Female connector
 SEAM: SEARRAY Plug (Male) connector
 Probe connector, headers, IPEX-37 access points



Clock routing technique

Probe clocks are routed using IPEX connectors for use with external clock sources as well as optional resistor stuffing as exhibited below. Jxp, Jxn are IPEX positive and negative IPEX connectors. The Rx, Ry (0402 SMD package) are not stuffed as default. SIGx, SIGy are defined signals reserved as probe clock option, if available. Please see Probe signal assignment table for assigned IPEX and availability of SIGx, SIGy per designed probe access.

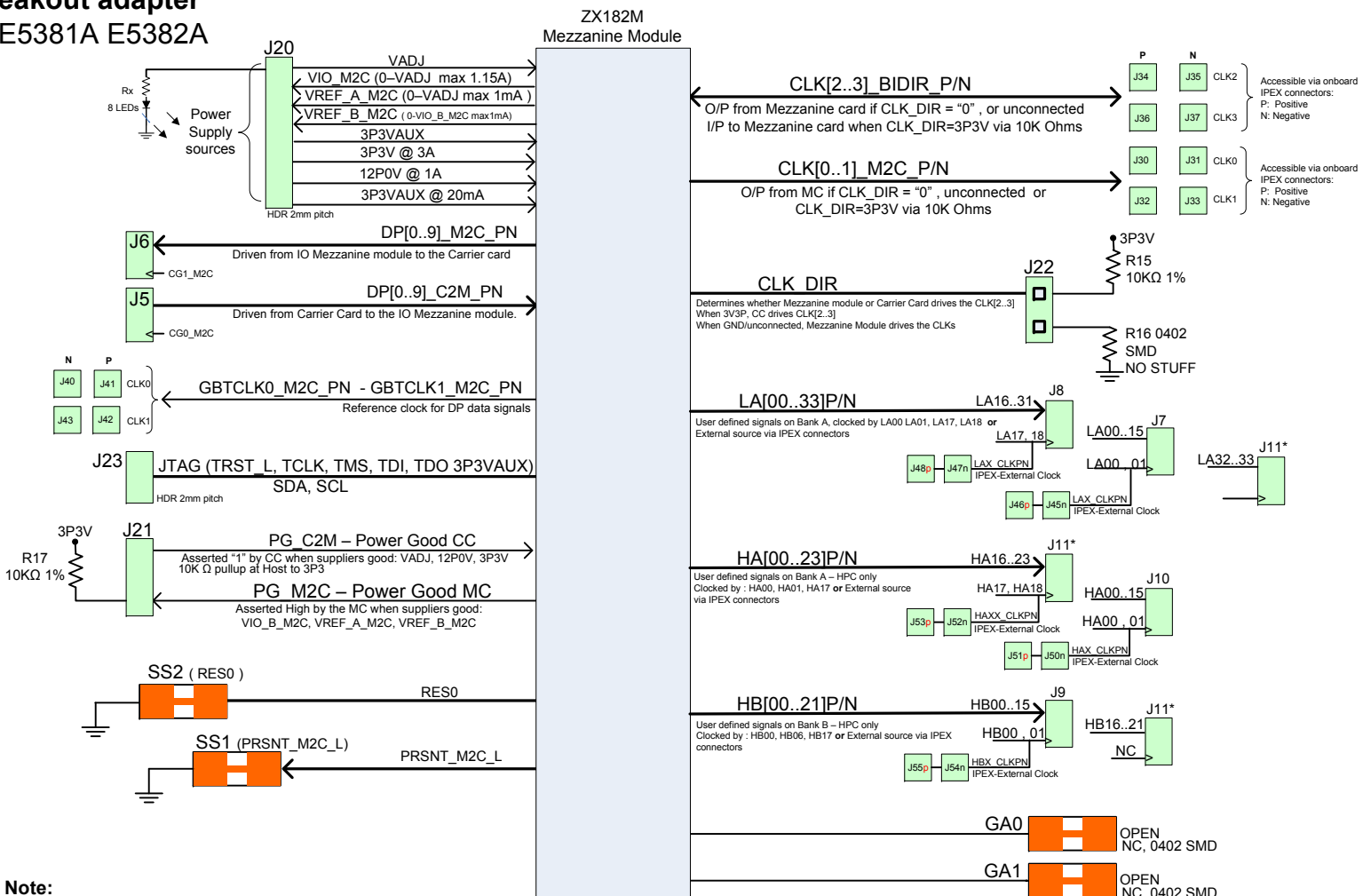
MC clock source routing to probes are accessible at IPEX connectors. SS (0402 SMD package) can be used to disconnect MC from providing the Clock or install appropriate filtering, if applicable.



Notice

ALL ZEBAX TECHNOLOGIES DESIGN SPECIFICATIONS, DRAWINGS, PUBLICATIONS, AND OTHER DOCUMENTS (TOGETHER AND SEPARATELY, "MATERIALS") ARE BEING PROVIDED "AS IS." ZEBAX MAKES NO WARRANTIES, EXPRESSED, IMPLIED, STATUTORY, OR OTHERWISE WITH RESPECT TO THE MATERIALS, AND EXPRESSLY DISCLAIMS ALL IMPLIED WARRANTIES OF NO INFRINGEMENT, MERCHANTABILITY, AND FITNESS FOR A PARTICULAR PURPOSE.

Information furnished is believed to be accurate and reliable. However, Zebax Technologies assumes no responsibility for the consequences of use of such information or for any infringement of patents or other rights of third parties that may result from its use. Specifications mentioned in this publication are subject to change without notice. This publication replaces all other information previously supplied. Zebax Technologies products are not authorized as in life support devices or systems.



Note:

- 1- MC Mezzanine Card - CC Carrier Card (Host)
- 2- All Clocks are accessible via onboard IPEX connectors
- 3- IPEX Jxpp is positive terminal, Jxnn is negative terminal of the external clock source.
- 4- J11* - J11 is shared connector supporting LA HA and HB. It has HA17 and HB17 clocking options

Note

ALL ZEBAX products are RoHS compliant and Lead Free unless otherwise indicated.

ZEBAX TECHNOLOGIES		
SANTA CRUZ, CA U.S.A (831) 2 2 2 – 0717		
WWW.ZEBAX.COM		
SPECIFIED DIMENSIONS ARE INCHES (MM). ROHS COMPLIANT	ASSEMBLY DRAWING	
	ITEM: ZX182M	
DESCRIPTION: FMC VITA 57.1 test board Agilent Tektronix Mictor or Flying Leads probe – passive mezzanine		
CHECKED: M. MARINA	DRAWN: SLAVIK	REVISION: 1.0
		SHEET: 2 OF 3

